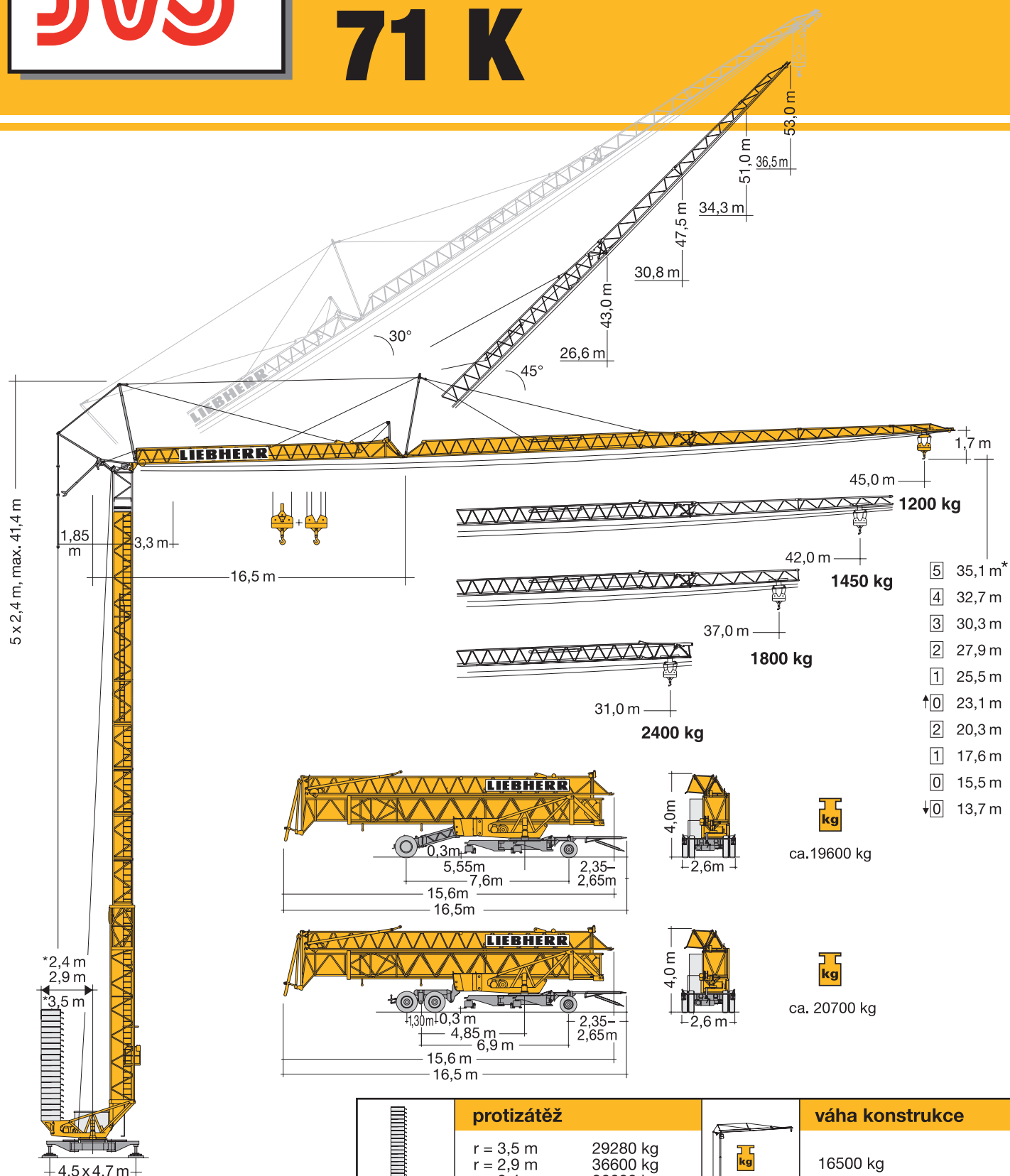









# VĚŽOVÝ JEŘÁB samostavitelný 71 K




	protizátěž		váha konstrukce
	r = 3,5 m		16500 kg
	r = 2,9 m		
	r = 2,4 m		

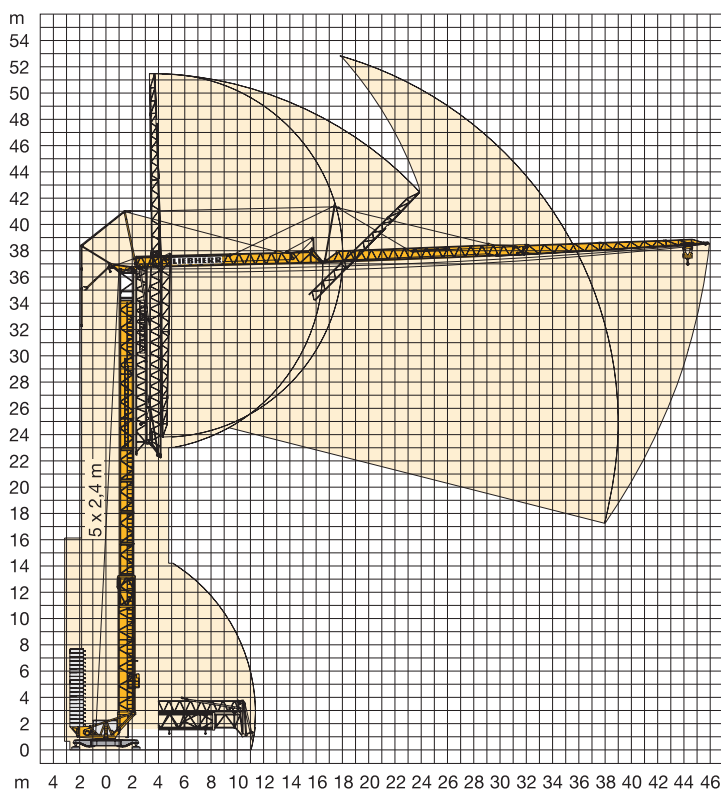
# LIEBHERR

# VYLOŽENÍ A NOSNOST



Vyložení m	Max. kg m/kg		Nosnost m/kg 2,9/3,5 m																								
			18,0	20,0	22,0	24,0	26,0	28,0	29,0	30,0	31,0	32,0	33,0	34,0	35,0	36,0	37,0	38,0	39,0	40,0	41,0	42,0	43,0	44,0	45,0		
45,0	3,3 – 20,3 3050		3050	3050	2790	2530	2310	2120	2040	1960	1890	1820	1750	1690	1630	1580	1530	1480	1430	1390	1350	1310	1270	1240	1200		
42,0	3,3 – 22,1 3050		3050	3050	3050	2780	2540	2340	2240	2160	2080	2000	1930	1870	1800	1750	1690	1640	1590	1540	1490	1450					
37,0	3,3 – 23,3 3050		3050	3050	3050	2950	2700	2480	2390	2290	2210	2130	2060	1990	1920	1860	1800										
31,0	3,3 – 25,0 3050		3050	3050	3050	3050	2920	2690	2590	2490	2400																
		m/kg 2,9/3,5 m																									
		10,0	11,0	12,0	13,0	14,0	16,0	18,0	20,0	22,0	24,0	26,0	28,0	30,0	31,0	33,0	35,0	37,0	39,0	41,0	42,0	43,0	44,0	45,0			
		45,0	3,3 – 20,0 3000	3,3 – 10,7 6000	6000	5810	5290	4850	4470	3860	3390	3000	2690	2430	2210	2030	1860	1790	1650	1540	1430	1330	1250	1210	1170	1140	1100
		42,0	3,3 – 21,7 3000	3,3 – 11,6 6000	6000	6000	5780	5310	4900	4230	3710	3300	2960	2680	2440	2240	2060	1980	1830	1710	1590	1490	1390	1350			
		37,0	3,3 – 22,9 3000	3,3 – 12,2 6000	6000	6000	6000	5620	5190	4490	3940	3510	3150	2850	2600	2380	2200	2110	1960	1820	1700						
		31,0	3,3 – 24,7 3000	3,3 – 13,1 6000	6000	6000	6000	6000	5610	4850	4270	3800	3410	3090	2820	2590	2390	2300									

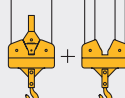
		Šikmý výložník 30° m/kg 2,9/3,5 m																					
m	m/kg	14,0	15,0	16,0	18,0	20,0	22,0	24,0	25,0	26,0	26,6	28,0	30,0	31,0	31,7	33,0	34,0	35,0	36,0	37,0	38,0	38,5	
45,0	3,1 – 14,3 3000	3000	2970	2760	2400	2120	1890	1700	1610	1530	1490	1390	1270	1220	1180	1120	1070	1030	990	950	910	900	
42,0	3,1 – 15,4 3000	3000	3000	3000	2620	2310	2060	1850	1760	1680	1640	1530	1400	1340	1300	1230	1180	1140	1100				
37,0	3,1 – 16,9 3000	3000	3000	3000	2870	2540	2270	2050	1950	1860	1810	1690	1550	1490	1450								
31,0	3,1 – 18,9 3000	3000	3000	3000	3000	2860	2560	2310	2200	2100	2050												

## MONTÁŽNÍ SCHÉMA



## PŘÍKONY A RYCHLOST EL. MOTORŮ

rychlost	spotřeba
 0 ↔ 0,8 U/min. sl./min tr./min	5,0 kW EDC
 0 ↔ 60,0 m/min	2,8 kW FU

	rychlost	kg	m/min
15,0 kW FU 	1	3000 6000	5,0 2,5
	2	3000 6000	24,0 12,0
	3	2100 4200	34,0 17,0
	4	1300 2600	58,0 29,0

přívodní kabel	jistič
87 m / 4x6 mm <sup>2</sup> / 400 V	21 kVA